

## **SUPER-SCREW®**



PATENTED PRODUCT

**MADE IN FRANCE**

**Lacings / Heavy Industries**

**100% COMPATIBLE WITH**  
BELT CLEANERS, BELT TRACKERS AND  
TRANSFER POINTS FROM OUR RANGE\*





MLT : inventor and manufacturer of the first  
**FLEXIBLE SPLICE TO SCREW**

**SUPER-SCREW®**

*the Original*  
 since  
 1994

5 generations of flexible splice to screw



**Splice your belt simply with screws !**

MLT is the original inventor and manufacturer of the **SUPER-SCREW®**, the only flexible screw splice, created in 1994. Our desire to go further in innovation and to always meet your needs has led the MLT teams to create new generations of **SUPER-SCREW®**.

When on-site, you are regularly exposed to field-based issues :

- need to minimize machine downtime as much as possible,
- difficult condition of access, harsh climatic conditions, challenged staff safety,
- overinvestment,
- need for skilled technicians leading to a lack of autonomy of the local staff, etc.

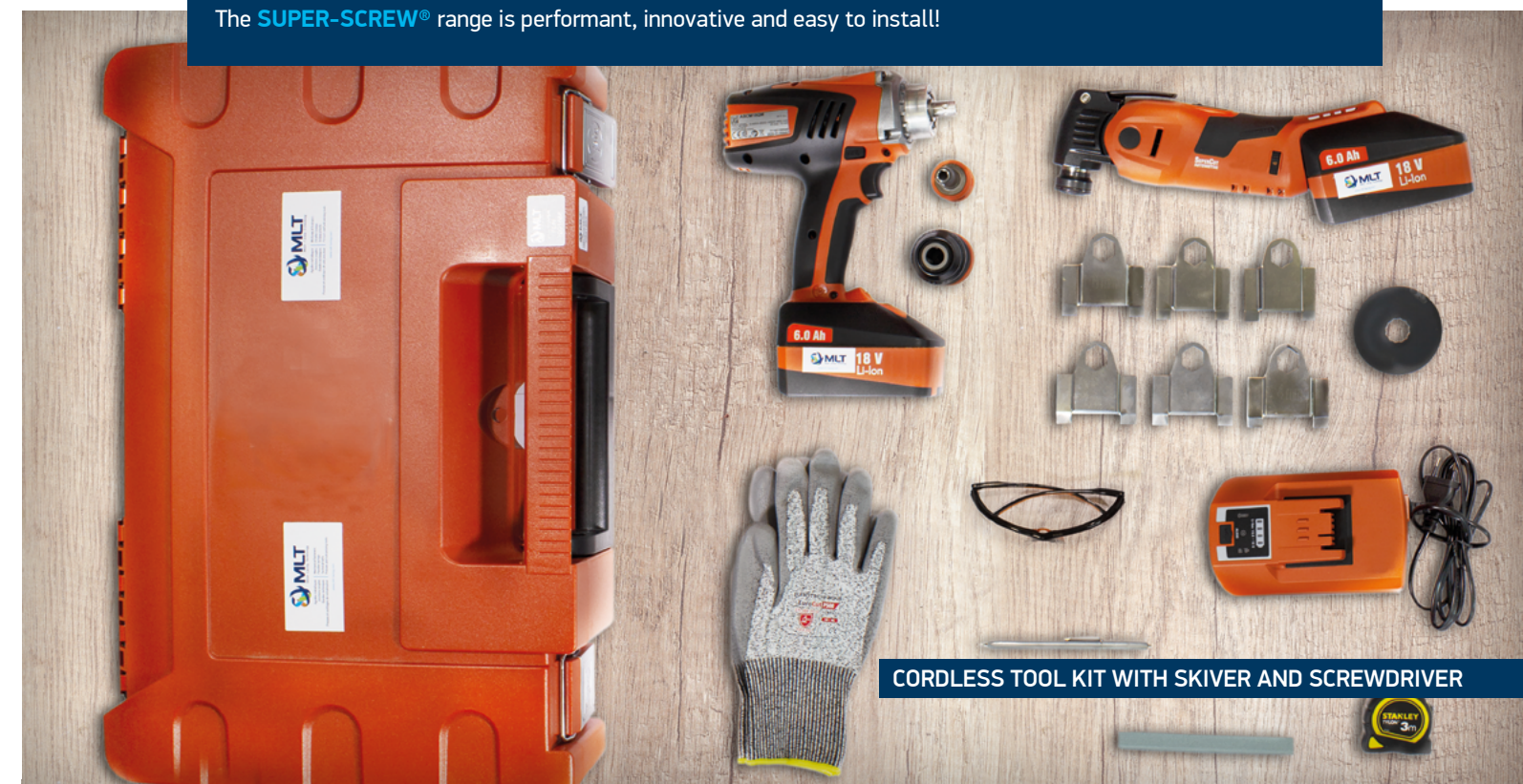
Screws allow the **SUPER-SCREW®** splice to be installed regardless of :

- the configuration of the conveyor,
- the conditions of access,
- weather conditions,
- temperature (from -80°C (-112°F) to 200°C (392°F) peak).

Furthermore, the screws are specifically designed as self-drilling and self-tapping : they separate the belt fibres without cutting.

This feedback inspires MLT teams on a daily basis, and makes them think about improving our products to offer you solutions that are always at the cutting edge of innovation. Based on these observations, MLT teams have developed a new generations of **SUPER-SCREW®**, unique and innovative splicing solutions for conveyor belts :

The **SUPER-SCREW®** range is performant, innovative and easy to install!





# SUPER-SCREW® RANGE

A wide choice for all your needs

## 5 UNIQUE SPLICES ON THE MARKET

In order to meet all your needs, the MLT teams have developed the SUPER-SCREW® range.

The inventor of the first flexible screw splice, the SUPER-SCREW®, offers you a wide range of choices for your screw splice system.

Discover a range of simple and fast splicing systems to meet all needs, constraints and requirements.

Find the SUPER-SCREW® splice that's right for you!



Entry range



Temporary solution

Abrasion resistant (150 mm³)

Packaging :

available in roll of 25 m only

Includes:

- Spacers / 1 screw size / PZ bit

Type	Thickness of the splice	
	Top	Bottom
35	4 mm (1/8'')	3.7 mm (1/8'')
63	5 mm (3/16'')	4 mm (1/8'')
80	6 mm (1/4'')	5 mm (3/16'')



The historical product



Permanent solution

Abrasion resistant (50 mm³) | Heat resistant | Fire resistant | Oil resistant | Heat retardant | Very low temperature

Packaging :

- 85 - 105 : In roll of 5, 7.5 and 15 m.
- 125 - 250 : In roll of 3, 5, 10 and 15 m.
- In Kit, pre-assembled and cut to lenght, for belt widhts of 800, 1000, 1200, 1400, 1600 mm.

Includes:

- Installation tools
- customization\*

Type	Thickness of the splice	
	Top	Bottom
85	7.5 mm (5/16'')	4.5 mm (3/16'')
100	7.5 mm (5/16'')	4.5 mm (3/16'')
105	9 mm (3 1/8'')	4.5 mm (3/16'')
125	6.5 mm (1/4'')	6 mm (1/4'')
127	8.5 mm (5/16'')	6 mm (1/4'')
140	6.5 mm (1/4'')	6 mm (1/4'')
145	8.5 mm (5/16'')	6 mm (1/4'')
160	6.5 mm (1/4'')	6 mm (1/4'')
165	8.5 mm (5/16'')	6 mm (1/4'')
180	6.5 mm (1/4'')	6 mm (1/4'')
185	8.5 mm (5/16'')	6 mm (1/4'')
200	8.5 mm (5/16'')	6 mm (1/4'')
205	10 mm (3/8'')	6 mm (1/4'')
250	10.5 mm (7/16'')	8 mm (5/16'')



The new generation



Permanent solution

Abrasion resistant (50 mm³) | Heat resistant | Fire resistant | Oil resistant | Heat retardant | Very low temperature | Food white

Packaging :

- In roll of 3 or 5\*\*, 10 and 25 m
- In Kit, pre-assembled and cut to lenght, for belt widhts of 500, 650, 800, 1000, 1200 mm.
- White food grade version available in 2000 mm lenght only

Includes:

- Installation tools
- customization\*

Type	Thickness of the splice	
	Top	Bottom
35	3.5 mm (1/8'')	3 mm (1/8'')
50	4 mm (1/8'')	3 mm (1/8'')
63	6 mm (1/4'')	3 mm (1/8'')
80	6 mm (1/4'')	4.7 mm (3/16'')



The security (Security indicator)



Permanent solution

Abrasion resistant (50 mm³) | Heat resistant | Fire resistant | Oil resistant | Heat retardant | Very low temperature

Packaging :

- 65 - 100 : In roll of 3 or 5\*\*, 10 and 25 m.
- 105 : In roll of 3 or 5\*\*, 10 and 15 m.
- In Kit, pre-assembled and cut to lenght, for belt widhts of 650, 800, 1000, 1200, 1400 mm.

Includes:

- Installation tools
- customization\*

Type	Thickness of the splice	
	Top	Bottom
65	6 mm (1/4'')	3 mm (1/8'')
85	8 mm (5/16'')	4.7 mm (3/16'')
100	8 mm (5/16'')	4.7 mm (3/16'')
105	10 mm (5/16'')	4.7 mm (3/16'')



High performance (Polyurethane)



Permanent solution

Abrasion resistant (15 mm³) | Oil resistant

Packaging :

- In Kit, pre-assembled and cut to lenght, for belt widhts of 650, 800, 1000, 1200, 1400, 2000, 3000 mm.

Includes:

- Installation tools
- Spacers / 2 screw sizes / PZ bit
- customization\*
- Easy Screw Solution

Type	Thickness of the splice	
	Top	Bottom
65	6 ou 8 mm (1/4 or 5/16'')	3 mm (1/8'')
85	8 ou 10 mm (5/16'')	4.7 mm (3/16'')
105	8 ou 10 mm (5/16'')	4.7 mm (3/16'')

\*Reserved for partners contracts

\*\*3 or 5 m depending on the quality of the coating, please consult us.



# SUPER-SCREW®

## PRIMARY

### Temporary solution



In order to give everyone access to **SUPER-SCREW®** quality and technology, **MLT** teams have created the **SUPER-SCREW® PRIMARY**, the French-made flexible screw joint accessible to everybody.

This temporary splice will allow you an easy installation in any situation in only 2 hours.



### Applications



Cement plants



Quarries and surface mines

### ABRASION RESISTANT

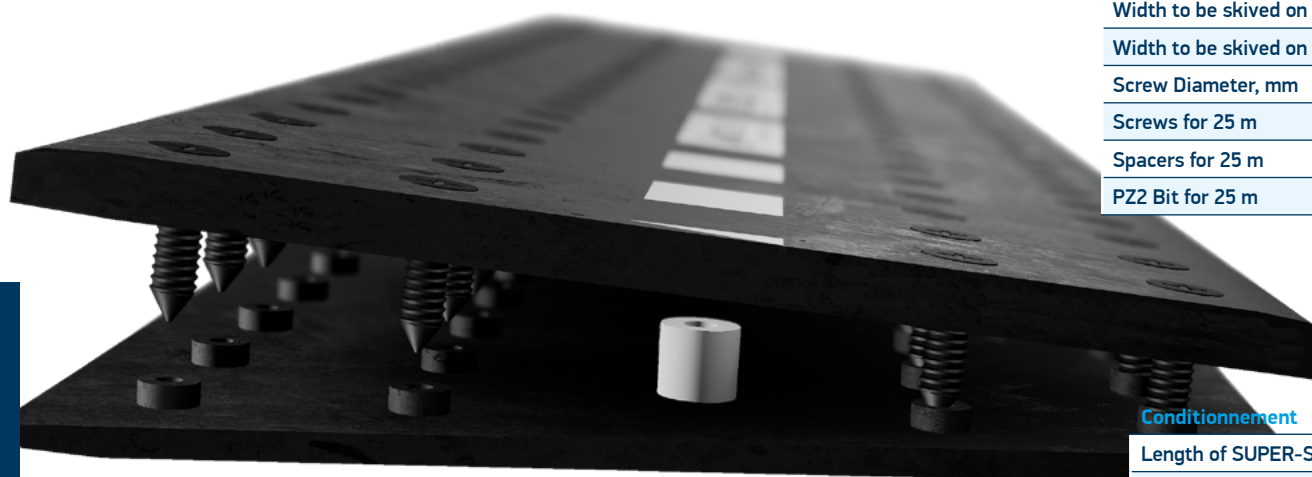
### THE ADVANTAGES

- Manufactured by the inventor of the SUPER-SCREW®
- French quality
- Reduces downtime of your conveyor
- Easy and fast to install (1 to 2 persons)
- Self installation, low investment
- Leak proof and Flexible
- Compatible with small pulley diameter
- Compatible with conveyor scrapers

### Steel screws and inserts

#### Steel screws and inserts

High resistance, it's the perfect choice for most applications  
**Quarries, Cement Plants, Mines, etc.**



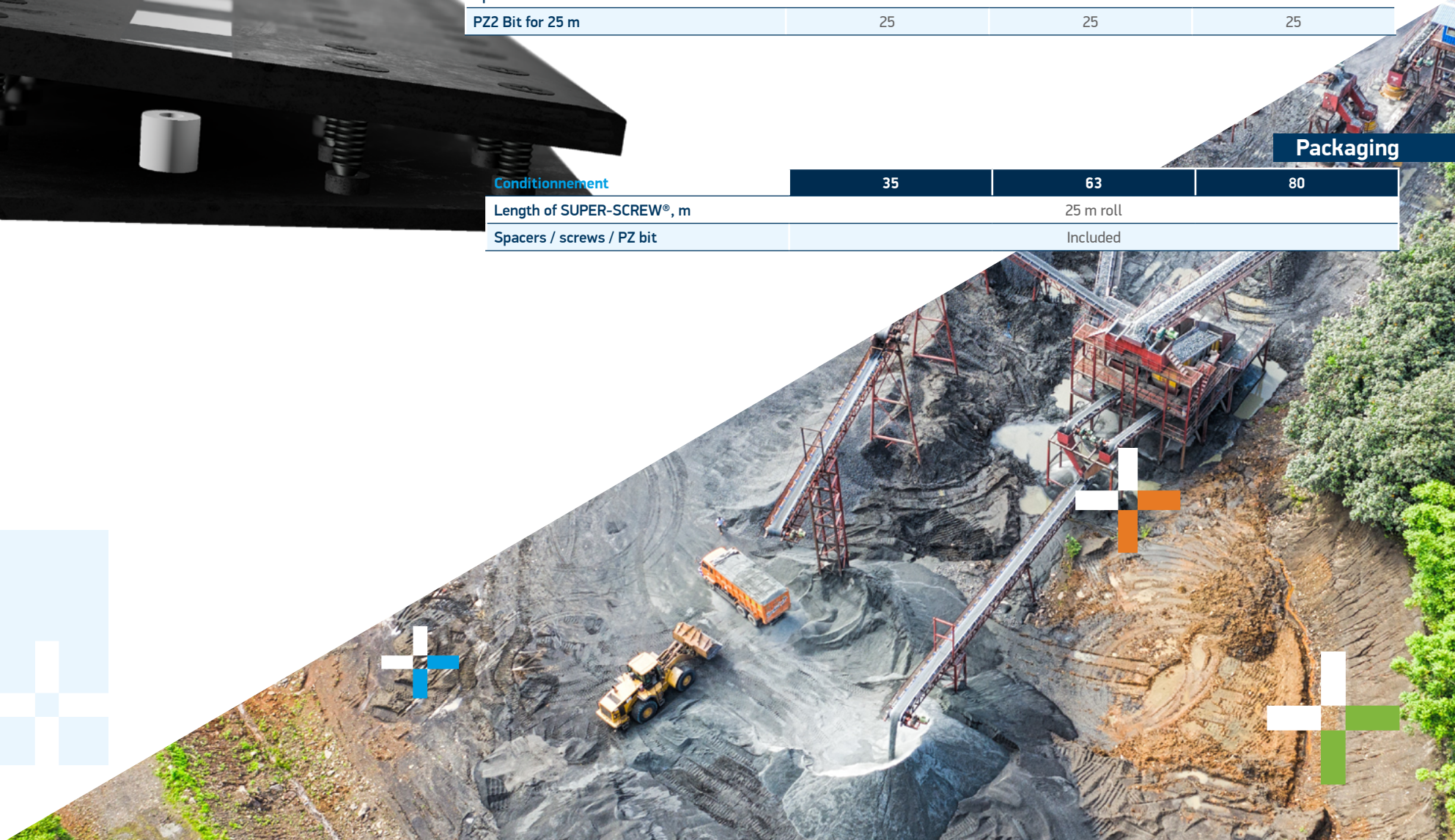
### Technical data

Belt thickness before skiving					mm	3+1	4+1.5	5+1.5	4+2	5+3	6+2	6+3	8+3	10+3					
					inch	1/8'' + 1/32''	5/32'' + 1/16''	5/32'' + 1/16''	5/32'' + 1/16''	5/32'' + 1/8''	1/4'' + 1/16''	1/4'' + 1/8''	5/16'' + 1/8''	3/8'' + 1/8''					
Skiving blades (mm)					3.5	4.5	4.5	4.5	2.5	4.5	3.5	6.5	2.5	6.5	3.5	8.5	3.5	10.5	3.5
Type	Belt tension		Operating tension	Min pulley Ø, mm	Spacer	Screw dimensions													
	N/mm		PIW																
35	250/2	250/3	200	160	506	5 x 12													
	315/2	315/3																	
	400/2	400/3	230																
63	500/3	500/4	360	200	508	5 x 14													
	630/2	630/3																	
	630/4																		
80	800/2	800/3	450	250		5 x 16													
	800/4																		

		35	63	80
mm	Top Cover Thickness, mm (± 1 mm)	4	5	6
	Bottom Cover Thickness, mm (± 1 mm)	3.7	4	5
inch	Top Cover Thickness, inch	1/8"	3/16"	1/4"
	Bottom Cover Thickness, inch	1/8"	1/8"	3/16"
Width of SUPER-SCREW®, mm (inch)		62 (2 1/2)	110 (4 1/4)	156 (6 1/8)
Width to be skived on trailing edge, mm (inch)		27 (1 1/16)	51 (2)	74 (3)
Width to be skived on leading edge, mm (inch)		37 (1 1/2)	61 (2 3/8)	84 (3 3/8)
Screw Diameter, mm		5		
Screws for 25 m		2750	5000	7000
Spacers for 25 m		250	250	250
PZ2 Bit for 25 m		25	25	25

### Packaging

Conditionnement	35	63	80
Length of SUPER-SCREW®, m	25 m roll		
Spacers / screws / PZ bit	Included		







## The historical product



MLT is the inventor of the world's first flexible screw splice, created in 1994: the **SUPER-SCREW® ORIGINAL**.

Since then, this permanent endless system has proven its worth all over the world by offering a simple and quick installation in any situation.



### Applications



Cement plants



Quarries and surface mines



Heavy industries



Underground mines

**ABRASION RESISTANT**

**OIL RESISTANT**

**HEAT RESISTANT\***

**FIRE RESISTANT**

**HEAT RETARDANT\*\***

**VERY LOW TEMPERATURE**

## THE ADVANTAGES

- Permanent solution
- Reduces downtime of your conveyor
- Optimizes your productivity
- Easy and fast to install (1 to 2 persons)
- Self installation, low investment
- Leak proof and Flexible
- Compatible with small pulley diameter
- Compatible with conveyor scrapers



## Technical data

Belt thickness before skiving					mm	6+2		6+3		8+3		10+3		
					inch	1/4'' + 3/32''	1/4'' + 1/8''	5/16'' + 1/8''	3/8'' + 1/8''					
Skiving blades (mm)						6.5	2.5	6.5	3.5	8.5	3.5	10.5	3.5	
Type*	Belt tension		Operating tension	Min pulley Ø, mm	Spacer	Screw dimensions								
	N/mm		PIW											
85	800/2	800/3	450	250	508	5x16 - 5x18								
	800/4													
100	1000/3	1000/4	570	300		5x18 - 5x20								
	1000/5	1000/6												
105	1000/3	1000/4	570	350	5x20 - 5x22									
	1000/5	1000/6												
125	1250/3	1250/4	710	350	6.3x19.5 - 6.3x21									
	1250/5	1250/6												
127	1250/3	1250/4		350	6.3x21 - 6.3x22.5									
	1250/5	1250/6												
140	1400/3	1400/4	800	350	6.3x19.5 - 6.3x21									
	1400/5													
145	1400/3	1400/4		350	6.3x21 - 6.3x22.5									
	1400/5													
160	1600/4	1600/5	914	400	6.3x21 - 6.3x22,5									
	1600/6													
165	1600/4	1600/5		400	6.3x22.5 - 6.3x24									
	1600/6													
180	1800/5	1800/6	1030	400	612	6.3x21 - 6.3x22,5								
185	1800/5	1800/6	1030	500		6.3x22.5 - 6.3x24								
200	2000/5	2000/6	1140	500		614	6.3x22.5 - 6.3x24							
205	2000/5	2000/6	1140	650			6.3x24 - 6.3x25.5							
250	>2000		>1430	800	616	6.3x27 - 6.3x28.5								

\*Our splicing solutions have been engineered for normal applications. For tough and abrasive environments, we encourage you to select an upper Super-Screw® size (please check specifications before)

	85	100	105	125	127	140	145	160	165	180	185	200	205	250
mm	7.5	7.5	9	6.5	8.5	6.5	8.5	6.5	8.5	6.5	8.5	8.5	10	10.5
inch	5/16	5/16	3 1/8	1/4	5/16	1/4	5/16	1/4	5/16	1/4	5/16	5/16	3/8	7/16
Top Cover Thickness, mm (± 1 mm)	7.5	7.5	9	6.5	8.5	6.5	8.5	6.5	8.5	6.5	8.5	8.5	10	10.5
Bottom Cover Thickness, mm (± 1 mm)	4.5							6						8
Top Cover Thickness, inch	5/16	5/16	3 1/8	1/4	5/16	1/4	5/16	1/4	5/16	1/4	5/16	5/16	3/8	7/16
Bottom Cover Thickness, inch	3/16							1/4						5/16
Width of SUPER-SCREW®, mm (inch)	156 (6 1/8)							266 (10 1/2)						
Width to be skived on trailing edge, mm (inch)	73 (2 7/8)							126 (4 15/16)						
Width to be skived on leading edge, mm (inch)	83 (3 1/4)							140 (5 1/2)						
Screw Diameter, mm	5							6.3						
		85 - 105					125 - 250							
Length of SUPER-SCREW®	1 m	3 m	5 m	10 m	25 m	1 m	3 m	5 m	7.5 m	15 m				
Number of screws required	280	840	1400	2800	7000	254	762	1270	1905	3810				
Number of PZ Bits required	1	3	5	10	25	1	3	5	8	15				

## Packaging

ROLL packaging	85 - 105				125 - 250			
Length of SUPER-SCREW®	3 m roll	5 m roll	10 m roll	25 m roll	3 m roll	5 m roll	7.5 m roll	15 m roll
Spacers / screws / PZ bit	to be ordered separately							
Installation tools	Included							
KIT packaging	85 - 250							
Belt width, mm (inch)	800 (31 1/2)	1000 (39 3/8)	1200 (48)	1400 (55 1/8)	1600 (63)			
Length of SUPER-SCREW®	830 (32 3/4)	1045 (40 3/4)	1245 (49 5/8)	1465 (57 9/16)	1660 (65 9/10)			
Spacers / screws / PZ bit	to be ordered separately							
Installation tools	Included							

\*Heat resistant : can be installed in systems with temperatures up to 150°C (302°F) continuous and 170°C (338°F) flash.

\*\*Heat retardant : can be installed on your high temperature belt and will withstand (temperatures) from 170°C continuous (338°F) to 200°C (392°F) flash.

## Types of steel for screws and inserts available

### Steel screws and inserts

High resistance, it's the perfect choice for most applications :

**Quarries, Cement Plants, Mines, etc.**

### Stainless steel screws and inserts

For resistance in corrosive and saline applications :

**Gold mines, Phosphate mines, Sorting center, Fertilizer plant, Recycling facilities and salt handling**





# SUPER-SCREW<sup>®</sup>

## EVOLUTION

### The new generation



In order to always improve innovation, **MLT's** R&D teams have gone beyond the limits of the **SUPER-SCREW<sup>®</sup> ORIGINAL** to create a brand new generation of flexible screw joints, even more flexible and resistant: The **SUPER-SCREW<sup>®</sup> EVOLUTION**.



#### Applications



Cement plants



Quarries and surface mines



Heavy industries



Underground mines

**ABRASION RESISTANT**

**OIL RESISTANT**

**FOOD WHITE**

**HEAT RESISTANT\***

**FIRE RESISTANT**

**HEAT RETARDANT\*\***

**VERY LOW TEMPERATURE**

### THE ADVANTAGES

- Permanent solution
- More flexible, more resistant
- Perfect integration in the belt
- Réduction du temps d'arrêt machine
- Optimizes your productivity
- Easy and fast to install (1 to 2 persons)
- Self installation, low investment
- Leak proof and Flexible
- Compatible with small pulley diameter
- Compatible with conveyor scrapers

#### Easier and faster to install

- Easy to cut out the splice
- Less screws for faster Installation
- Easier skiving
- New spacers for equal skiving size on both sides

#### Fully integrated

- Smaller pulley diameters
- Better compatibility with scrapers

#### Thinner and more resistant

- Better integration into the belt
- Improved breaking strength
- Higher abrasion resistance
- More flexible splice

### Types of steel for screws and inserts available

#### Steel screws and inserts

High resistance, it's the perfect choice for most applications :  
**Quarries, Cement Plants, Mines, etc.**

#### Stainless steel screws and inserts

For resistance in corrosive and saline applications :  
**Gold mines, Phosphate mines, Sorting center, Fertilizer plant, Recycling facilities and salt handling**



### Technical data

Belt thickness before skiving				mm		3+1.5		4+1.5		5+1.5		4+2		5+3		6+2		6+3		8+3		
				inch		1/8'' +1/16''		5/32'' +1/16''		3/16'' +1/16''		5/32'' +1/16''		3/16'' +1/8''		1/4'' +1/16''		1/4'' +1/8''		5/16'' +1/8''		
Skiving blades (mm)						3.5		4.5		4.5		4.5 2.5		4.5 3.5		6.5 2.5		6.5 3.5		8.5 3.5		
Type*	Belt tension		Operating tension	Min pulley Ø, mm	Screw dimensions																	
	N/mm		PIW																			
35	250/2	250/3	200	315	5x10 - 5x12																	
	315/2	315/3																				
50	400/2	400/3	360	500	5x12 - 5x14																	
	500/3	500/4																				
63	630/2	630/3	360	630	5x14 - 5x16																	
	630/4																					
80	800/2	800/3	450	800																		
	800/4																					

Spacers: One size spacer

\*Our splicing solutions have been engineered for normal applications. For tough and abrasive environments, we encourage you to select an upper Super-Screw<sup>®</sup> size (please check specifications before)

	mm					
		35	50	63	80	
Top Cover Thickness, mm (± 1 mm)		3.5	4	6	6	
Bottom Cover Thickness, mm (± 1 mm)		3	3	3	4.7	
Top Cover Thickness, inch		1/8	5/32	1/4	1/4	
Bottom Cover Thickness, inch		1/8	1/8	1/8	3/16	
Width of SUPER-SCREW <sup>®</sup> , mm (inch)		72 (2 27/32)	116 (4 9/16)	116 (4 9/16)	160 (6 5/16)	
Width to be skived on trailing edge, mm (inch)		37 (1 15/32)	59 (2 5/16)	59 (2 5/16)	80 (3 5/32)	
Width to be skived on leading edge, mm (inch)		37 (1 15/32)	59 (2 5/16)	59 (2 5/16)	80 (3 5/32)	
Screw Diameter, mm		5				
Length of SUPER-SCREW <sup>®</sup>		1 m	3 m	5 m	10 m	25 m
		35				
Number of screws required		92	276	460	920	2300
Number of spacers required		4	12	20	40	100
Number of PZ Bits required		1	1	1	2	2
		50 - 63				
Number of screws required		184	552	920	1840	4600
Number of spacers required		4	12	20	40	100
Number of PZ Bits required		1	1	1	2	2
		80				
Number of screws required		276	828	1380	2760	6900
Number of spacers required		4	12	20	40	100
Number of PZ Bits required		1	1	1	2	2

### Packaging

		35 - 80			
ROLL packaging		3 m roll	5 m roll	10 m roll	25 m roll
Length of SUPER-SCREW <sup>®</sup>					
Installation tools / Spacers / PZ bit		Included			
Screws		to be ordered separately			
KIT packaging		35 - 80			
Belt width, mm (inch)		800 (31 1/2)	1000 (3/8)	1200 (48)	1400 (55 1/8) 1600 (63)
Longueur de SUPER-SCREW <sup>®</sup> mm (inch)		832 (32 3/4)	1057 (40 3/4)	1260 (49 5/8)	1462 (57 9/16) 1665 (65 9/10)
Installation tools / Spacers / PZ bit		Included			
Screws		Included			

### PERFECT INTEGRATION

Product specially designed for thin belts

After skiving, perfect integration in the belt

\*Heat resistant : can be installed in systems with temperatures up to 150°C (302°F) continuous and 170°C (338°F) flash.

\*\*Heat retardant : can be installed on your high temperature belt and will withstand (temperatures) from 170°C continuous (338°F) to 200°C (392°F) flash.





## The first splice in the world with a safety indicator

In order to optimize your maintenance and your conveyor downtime, **MLT** teams have revolutionized the world of splicing with the **SUPER-SCREW® SECURITY**, equipped with a **safety indicator**.

This new system allows you to predict and then anticipate the time to change your splice, offering you a considerable reduction in downtime.

### Applications



Cement plants



Quarries and surface mines



Heavy industries



Underground mines

**ABRASION RESISTANT**

**OIL RESISTANT**

**HEAT RESISTANT\***

**FIRE RESISTANT**

**HEAT RETARDANT\*\***

**VERY LOW TEMPERATURE**

### THE ADVANTAGES

- Safety: red border visible when the junction must be replaced
- Permanent solution
- Perfect integration in the belt
- Optimizes your productivity
- Easy and fast to install (1 to 2 persons)
- Self installation, low investment
- Leak proof and Flexible
- Compatible with small pulley diameter
- Compatible with conveyor scrapers

**NEW**  
**WITH SAFETY INDICATOR**

**Steel screws and inserts**  
High resistance, it's the perfect choice for most applications :  
**Quarries, Cement Plants, Mines, etc.**



**Stainless steel screws and inserts**  
For resistance in corrosive and saline applications :  
**Gold mines, Phosphate mines, Sorting center, Fertilizer plant, Recycling facilities and salt handling**

### Technical data

Belt thickness before skiving				mm	5+3		6+2		6+3		8+3		10+3	
				inch	3/16'' + 1/8''	1/4'' + 1/16''	1/4'' + 1/8''	5/16'' + 1/8''	3/8'' + 1/8''					
Skiving blades (mm)					4.5	3.5	6.5	2.5	6.5	3.5	8.5	3.5	10.5	3.5
Type	Belt tension		Operating tension	Min pulley Ø, mm	Screw dimensions									
	N/mm		PIW											
65	630/2	630/3	360	200	5x14 - 5x16									
	630/4													
85	800/2	800/3	450	250	5x16 - 5x18									
	800/4													
100	1000/3	1000/4	570	300	5x18 - 5x20									
	1000/5 1000/6													
105	1000/3	1000/4	570	350	5x20 - 5x22									
	1000/5 1000/6													

\*Our splicing solutions have been engineered for normal applications. For tough and abrasive environments, we encourage you to select an upper Super-Screw® size (please check specifications before)

		65	85	100	105	
mm	Top Cover Thickness, mm (± 1 mm)	6	8	8	10	
	Bottom Cover Thickness, mm (± 1 mm)	3		4.7		
inch	Top Cover Thickness, inch	1/4	5/16	5/16	3/8	
	Bottom Cover Thickness, inch	1/8		3/16		
Width of SUPER-SCREW®, mm (inch)		116 (4 9/16)		160 (6 5/16)		
Width to be skived on trailing edge, mm (inch)		59 (2 5/16)		80 (3 1/8)		
Width to be skived on leading edge, mm (inch)		59 (2 5/16)		80 (3 1/8)		
Screw Diameter, mm		5				
Length of SUPER-SCREW®		1 m	3 m	5 m	10 m	15 m*** 25 m
		65				
Number of screws required		184	552	920	1840	4600
Number of spacers required		4	12	20	40	100
Number of PZ Bits required		1	1	1	2	2
		85 - 105				
Number of screws required		276	828	1380	2760	4140 6900
Number of spacers required		4	12	20	40	60 100
Number of PZ Bits required		1	1	1	2	2 2

### Packaging

		65 - 105				
ROLL packaging						
Length of SUPER-SCREW®		3 m roll	5 m roll	10 m roll	15 m*** roll	25 m roll
Installation tools / Spacers / PZ bit		Included				
Screws		to be ordered separately				

		65 - 105				
KIT packaging						
Belt width, mm (inch)		650 (26)	800 (31 1/2)	1000 (39 3/8)	1200 (48)	1400 (55 1/8)
Length of SUPER-SCREW® mm (inch)		675 (26 4/7)	832 (32)	1057 (40 3/4)	1260 (49 5/8)	1462 (57 9/16)
Installation tools / Spacers / PZ bit		Included				
Screws		Included				

\*\*\*Note : SUPER-SCREW® SECURITY 105 only, for this model, maximum length of roll is 15 m.



**NEW**  
**SAFETY INDICATOR**

\*Heat resistant : can be installed in systems with temperatures up to 150°C (302°F) continuous and 170°C (338°F) flash.

\*\*Heat retardant : can be installed on your high temperature belt and will withstand (temperatures) from 170°C continuous (338°F) to 200°C (392°F) flash.



# SUPER-SCREW® PREMIUM

## The only flexible screw splice in POLYURETHANE

+ In order to meet the most extreme environments and the most demanding requirements, **MLT** created the **SUPER-SCREW® PREMIUM** : the first **flexible splice to screw in POLYURETHANE**, designed for extremely abrasive applications\*.

The polyurethane that composes the upper part of this new **SUPER-SCREW®** splice provides a considerable gain in abrasion resistance (15 mm<sup>3</sup>), while maintaining the flexibility, perfect integration and strength of **SUPER-SCREW®**.

### + Applications



Cement plants



Quarries and  
surface mines



Heavy industries

**VERY HIGH ABRASION RESISTANCE (15 mm<sup>3</sup>)**

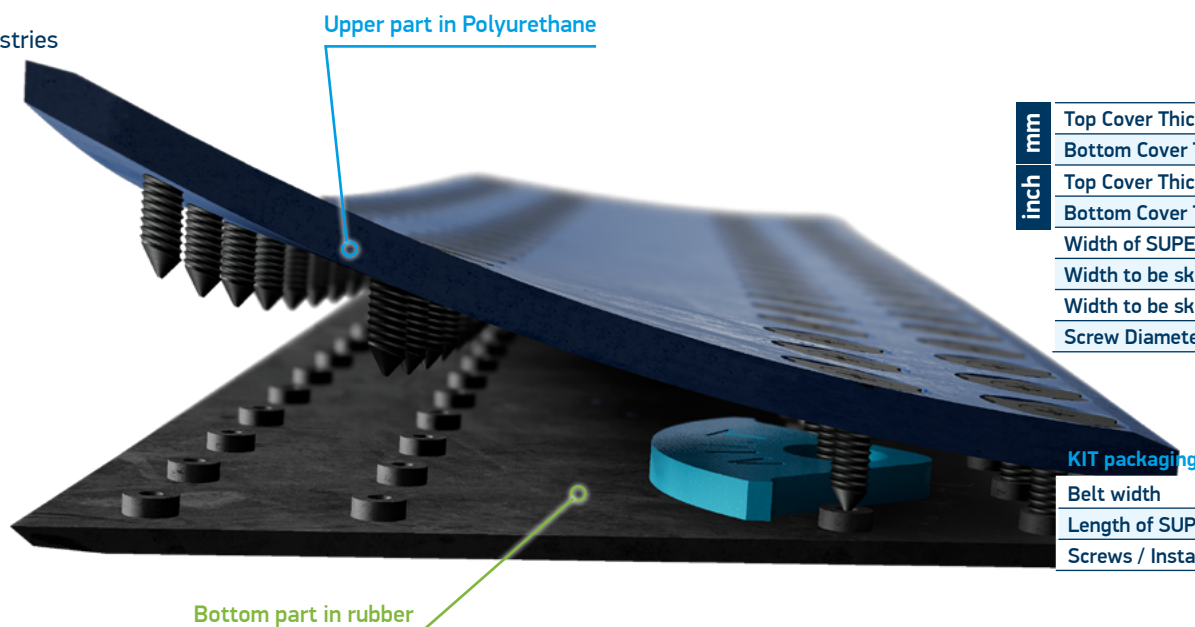
### THE ADVANTAGES

- Very high abrasion resistance (15 mm<sup>3</sup>)
- Polyurethane: reduced friction
- Permanent solution
- Reduces downtime of your conveyor
- Optimizes your productivity
- Easy and fast to install (1 to 2 persons)
- Self installation, low investment
- Leak proof and Flexible
- Compatible with small pulley diameter
- Compatible with conveyor scrapers



POLYURETHANE

UNIQUE ON THE MARKET



Upper part in Polyurethane

Bottom part in rubber

### Technical data

Belt thickness before skiving				mm		6+2		6+3		8+3		10+3	
				inch		1/4'' + 1/16''		1/4'' + 1/8''		5/16'' + 1/8''		3/8'' + 1/8''	
Skiving blades (mm)						6.5	2.5	6.5	3.5	8.5	3.5	10.5	3.5
Type*	Belt tension		Operating tension	Min pulley Ø, mm	Screw dimensions								
	N/mm		PIW										
65 - 6mm	630/2	630/3	360	200	5x14 - 5x16								
	630/4												
65 - 8mm	630/2	630/3	360	250	5x16 - 5x18								
	630/4												
85 - 8mm	800/2	800/3	450	250	5x16 - 5x18								
	800/4												
85 - 10mm	800/2	800/3	450	300	5x18 - 5x20								
	630/4												
105 - 8mm	1000/3	1000/4	570	300	5x18 - 5x20								
	1000/5	1000/6											
105 - 10mm	1000/3	1000/4	570	350	5x20 - 5x22								
	1000/5	1000/6											

\*Our splicing solutions have been engineered for normal applications. For tough and abrasive environments, we encourage you to select an upper Super-Screw® size (please check specifications before)

	65 - 6mm	65 - 8mm	85 - 8mm	85 - 10mm	105 - 8mm	105 - 10mm
mm						
Top Cover Thickness, mm (± 1 mm)	6	8	8	10	8	10
Bottom Cover Thickness, mm (± 1 mm)	3				4.7	
inch						
Top Cover Thickness, (inch)	1/4	5/16	5/16	3/8	5/16	3/8
Bottom Cover Thickness, (inch)	1/8				3/16	
Width of SUPER-SCREW®, mm (inch)	116 (4 9/16)				160 (6 5/16)	
Width to be skived on trailing edge, mm (inch)	58 (2 5/16)				80 (3 1/8)	
Width to be skived on leading edge, mm (inch)	58 (2 5/16)				80 (3 1/8)	
Screw Diameter, mm				5		

### Packaging

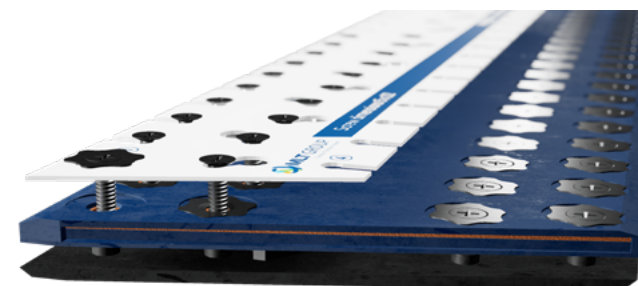
KIT packaging					
65 - 105					
Belt width	650 mm	800 mm	1000 mm	1200 mm	1400 mm
Length of SUPER-SCREW®	675 mm	832 mm	1057 mm	1260 mm	1462 mm
Screws / Installation tools / Spacers / PZ bit	Included				

## Types of steel for screws and inserts available

### + Steel screws and inserts

High resistance, it's the perfect choice for most applications :

Quarries, Cement Plants, Mines, etc.



**EVEN FASTER  
EASY SCREW SOLUTION**

**NEW**

In order to optimize screwing time of the **SUPER-SCREW® PREMIUM** splice, **MLT** created **Easy Screw Solution**. This system of pre-positioning of the screws will allow you to save even more time in your belt splicing.

\*Only compatible with applications with anti-abrasive and oil-resistance requirements





**SUPER-SCREW**

PATENTED PRODUCT  
MADE IN FRANCE

## MLT Minet Lacing Technology

More than 70 years of innovation  
at your service



Distributor logo

 **MLT GROUP**  
Conveyor Solutions Expert

 **MLT GROUP**  
Minet Lacing Technology

 **TECHNICGUM**  
MLT GROUP

[www.mltgroup-conveyor.com](http://www.mltgroup-conveyor.com) - [info@mltgroup-conveyor.com](mailto:info@mltgroup-conveyor.com)